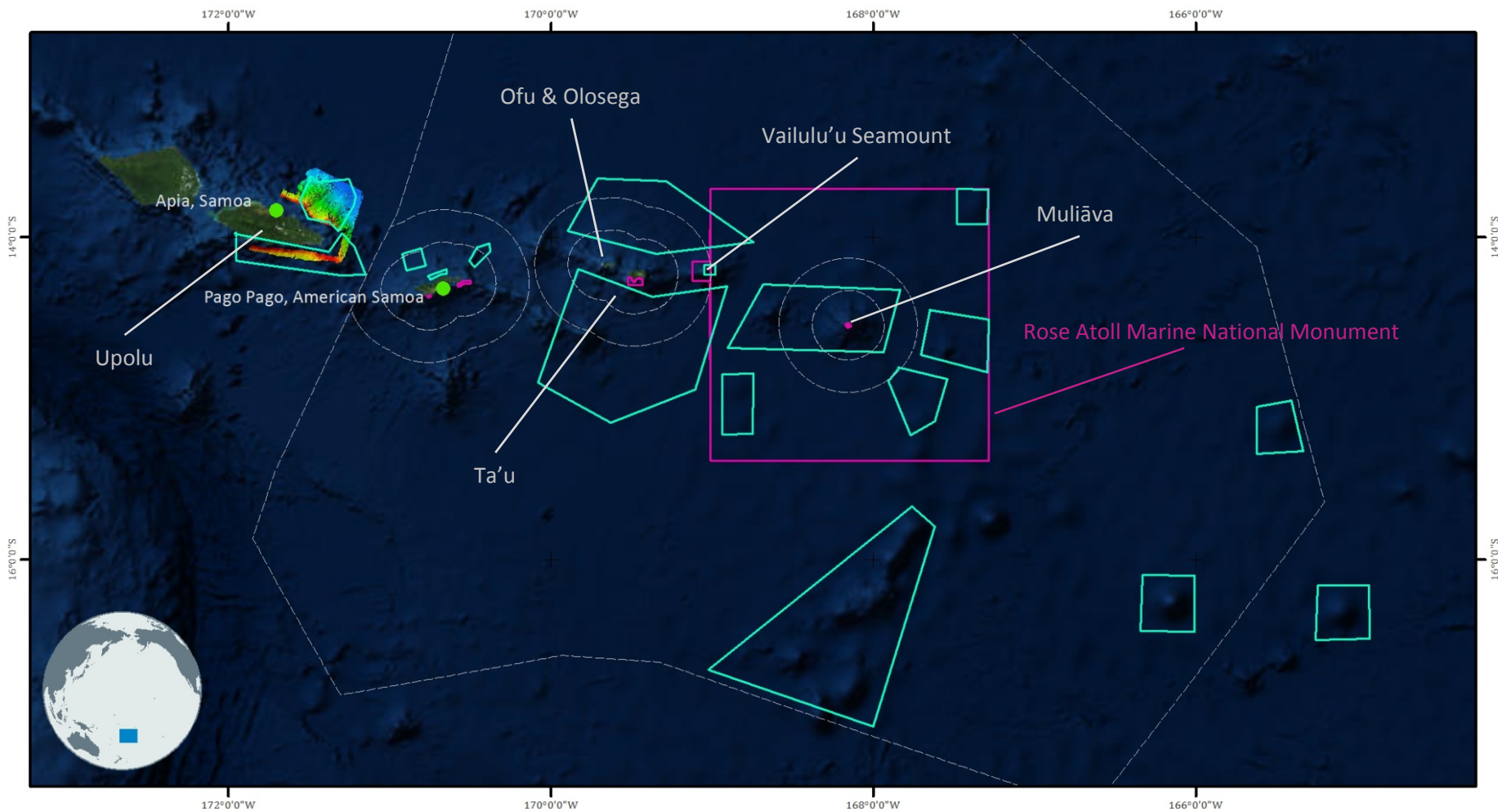







EX-17-04 American Samoa, Independent Samoa and Cook Islands Telepresence Mapping

April 4 - 21, 2017

Ports: Apia, Western Samoa to Pago, Pago American Samoa



 EX1704 Mapping Operational Areas
 National Marine Sanctuary of American Samoa

 US Maritime Boundaries

0 50 100 200
 Nautical Miles



Service Layer Credits: Source: Esri, DigitalGlobe, GeoEye, i-cubed, Earthstar Geographics, CNES/Airbus DS, USDA, USGS, AEX, Getmapping, Aerogrid, IGN, IGP, swisstopo, and the GIS User Community